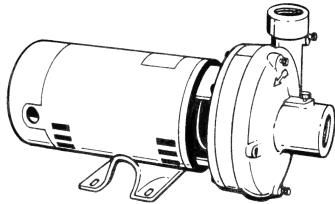


<b>JOB:</b>   <b>UNIT TAG:</b> <b>ENGINEER:</b> <b>CONTRACTOR:</b>	<b>REPRESENTATIVE:</b>   <b>ORDER NO.</b> <b>SUBMITTED BY:</b> <b>APPROVED BY:</b>	<b>DATE:</b> <b>DATE:</b> <b>DATE:</b>
---	---	--



## Series 1535

### Close-Coupled Centrifugal Pumps

**FEATURES**

- Bronze Fitted Construction
- Cast Iron Volute
- Brass Impeller

**TYPE OF SEAL**

- Standard Seal  
 Buna-Carbon/Ceramic  
 0°F to +225°F  
 (-18°C to +107°C)

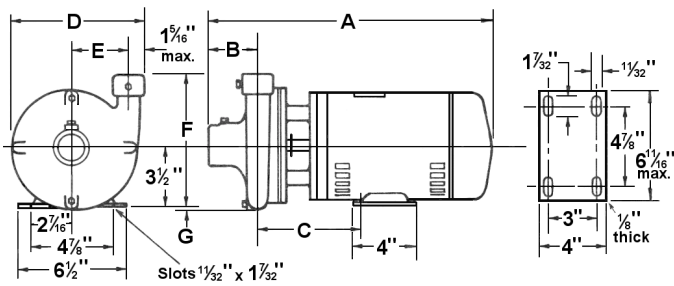
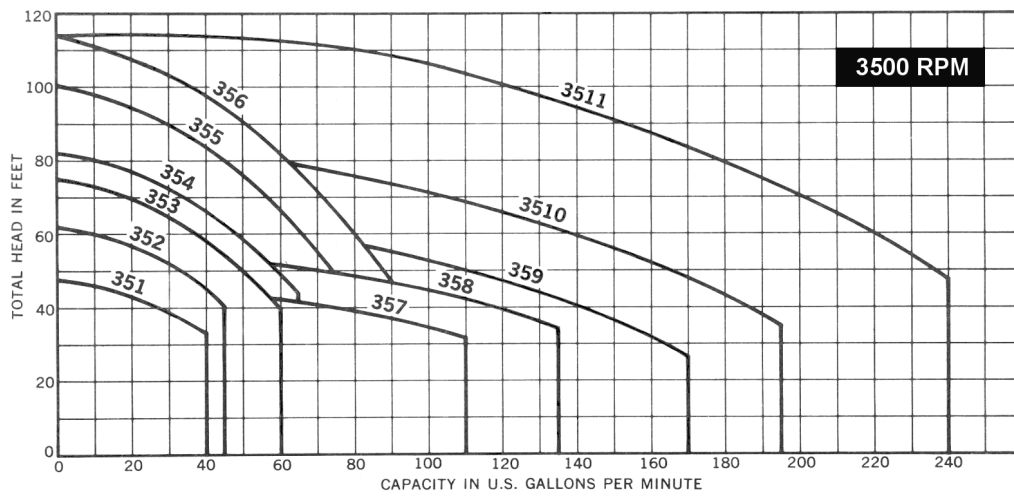
**WORKING PRESSURE**

- 175 psi (12 bar) W.P.

**SCHEDULE**

MODEL NUMBER	PART NUMBER	VOLTAGE	PHASE	CYCLE	TAGGING INFORMATION	QUANTITY
351S	168021	115/230	1	60		
352S	168023	115/230	1	60		
353S	168025	115/230	1	60		
354S	168027	115/230	1	60		
355S	168029	115/230	1	60		
357S	168034	115/230	1	60		
358S	168036	115/230	1	60		
351T	168022	208-230/460	3	60		
352T	168024	208-230/460	3	60		
353T	168026	208-230/460	3	60		
354T	168028	208-230/460	3	60		
355T	168031	208-230/460	3	60		
356T	168033	208-230/460	3	60		
357T	168035	208-230/460	3	60		
358T	168038	208-230/460	3	60		
359T	168040	208-230/460	3	60		
3510T	168042	208-230/460	3	60		
3511T	168044	208-230/460	3	60		

All single phase motors have built-in overload protection. Motors are Open Dripproof.



MODEL NO.	HP	DIMENSIONS IN INCHES (MM)								
		Suction	Discharge	A (MAX.)	B	C	D	E	F	G
351S	1/3	1-1/4 (32)	1 (25)	14-3/4 (375)	2-15/16 (75)	5-5/16 (135)	8 (203)	3-3/8 (86)	8 (203)	1/4 (6)
351T	1/3	1-1/4 (32)	1 (25)	15 (381)	2-15/16 (75)	5-5/16 (135)	8 (203)	3-3/8 (86)	8 (203)	1/4 (6)
352S	1/2	1-1/4 (32)	1 (25)	15 (381)	2-15/16 (75)	5-5/16 (135)	8 (203)	3-3/8 (86)	8 (203)	1/4 (6)
352T	1/2	1-1/4 (32)	1 (25)	15 (381)	2-15/16 (75)	5-5/16 (135)	8 (203)	3-3/8 (86)	8 (203)	1/4 (6)
353S	3/4	1-1/4 (32)	1 (25)	15-1/2 (394)	2-15/16 (75)	5-5/16 (135)	8 (203)	3-3/8 (86)	8 (203)	1/4 (6)
353T	3/4	1-1/4 (32)	1 (25)	15-1/2 (394)	2-15/16 (75)	5-5/16 (135)	8 (203)	3-3/8 (86)	8 (203)	1/4 (6)
354S	1	1-1/4 (32)	1 (25)	15-3/4 (400)	2-15/16 (75)	5-5/16 (135)	8 (203)	3-3/8 (86)	8 (203)	1/4 (6)
354T	1	1-1/4 (32)	1 (25)	16 (406)	2-15/16 (75)	5-5/16 (135)	8 (203)	3-3/8 (86)	8 (203)	1/4 (6)
355S	1-1/2	1-1/4 (32)	1 (25)	16-15/16 (430)	2-15/16 (75)	5-5/16 (135)	8 (203)	3-3/8 (86)	8 (203)	1/4 (6)
355T	1-1/2	1-1/4 (32)	1 (25)	16-7/16 (418)	2-15/16 (75)	5-5/16 (135)	8 (203)	3-3/8 (86)	8 (203)	1/4 (6)
356T	2	1-1/4 (32)	1 (25)	16-7/16 (418)	2-15/16 (75)	5-5/16 (135)	8 (203)	3-3/8 (86)	8 (203)	1/4 (6)
357S	1	2 (51)	1-1/2 (38)	16 (406)	2-15/16 (75)	5-9/16 (141)	8-3/8 (213)	3-3/8 (86)	8-3/4 (222)	1/2 (13)
357T	1	2 (51)	1-1/2 (38)	16-1/4 (413)	2-15/16 (75)	5-9/16 (141)	8-3/8 (213)	3-3/8 (86)	8-3/4 (222)	1/2 (13)
358S	1-1/2	2 (51)	1-1/2 (38)	17-3/16 (437)	2-15/16 (75)	5-9/16 (141)	8-3/8 (213)	3-3/8 (86)	8-3/4 (222)	1/2 (13)
358T	1-1/2	2 (51)	1-1/2 (38)	16-11/16 (424)	2-15/16 (75)	5-9/16 (141)	8-3/8 (213)	3-3/8 (86)	8-3/4 (222)	1/2 (13)
359T	2	2 (51)	1-1/2 (38)	16-11/16 (424)	2-15/16 (75)	5-9/16 (141)	8-3/8 (213)	3-3/8 (86)	8-3/4 (222)	1/2 (13)
3510T	3	2 (51)	1-1/2 (38)	17-3/16 (437)	2-15/16 (75)	5-9/16 (141)	8-3/8 (213)	3-3/8 (86)	8-3/4 (222)	1/2 (13)
3511T	5	2 (51)	1-1/2 (38)	18-11/16 (475)	2-15/16 (75)	5-9/16 (141)	8-3/8 (213)	3-3/8 (86)	8-3/4 (222)	1/2 (13)

Dimensions are subject to change. Not to be used for construction purposes unless certified.



Bell & Gossett

Bell & Gossett  
 8200 N. Austin Avenue, Morton Grove, IL 60053  
 Phone (847)966-3700  
 Facsimile (847)966-9052  
 www.bellgossett.com

