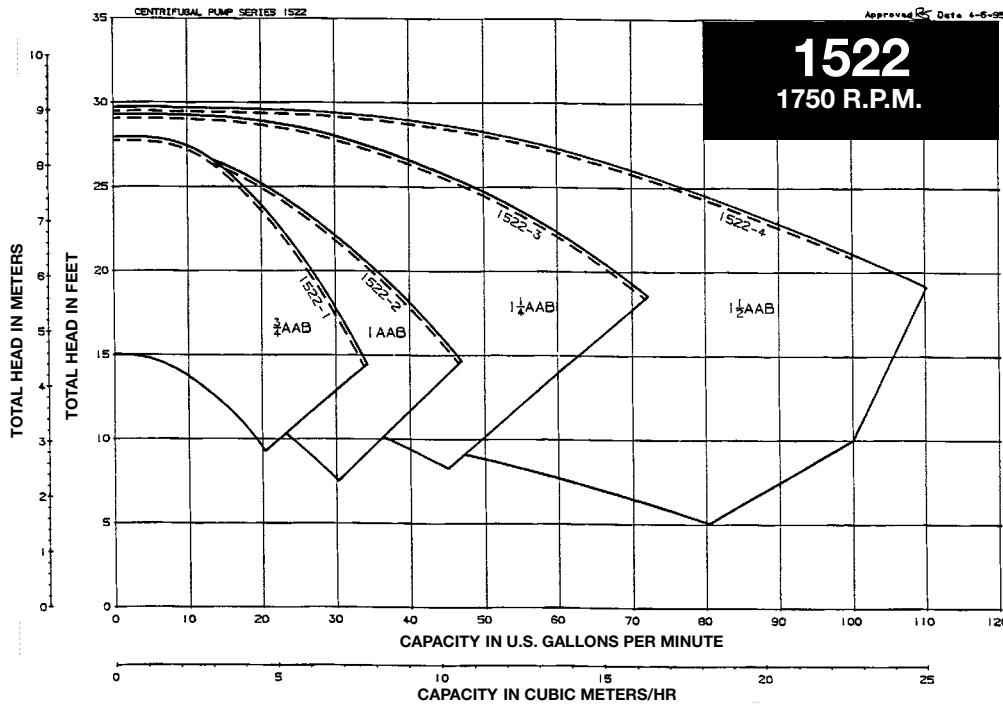


PERFORMANCE CURVE CHART

NOTE: Dotted lines represent sizes available from stock.



SERIES 1522

**Close-Coupled Centrifugal Pumps
For 60 Cycle – 1750 RPM Motor Operation**



ITT Bell & Gossett
ITT Fluid Technology Corporation

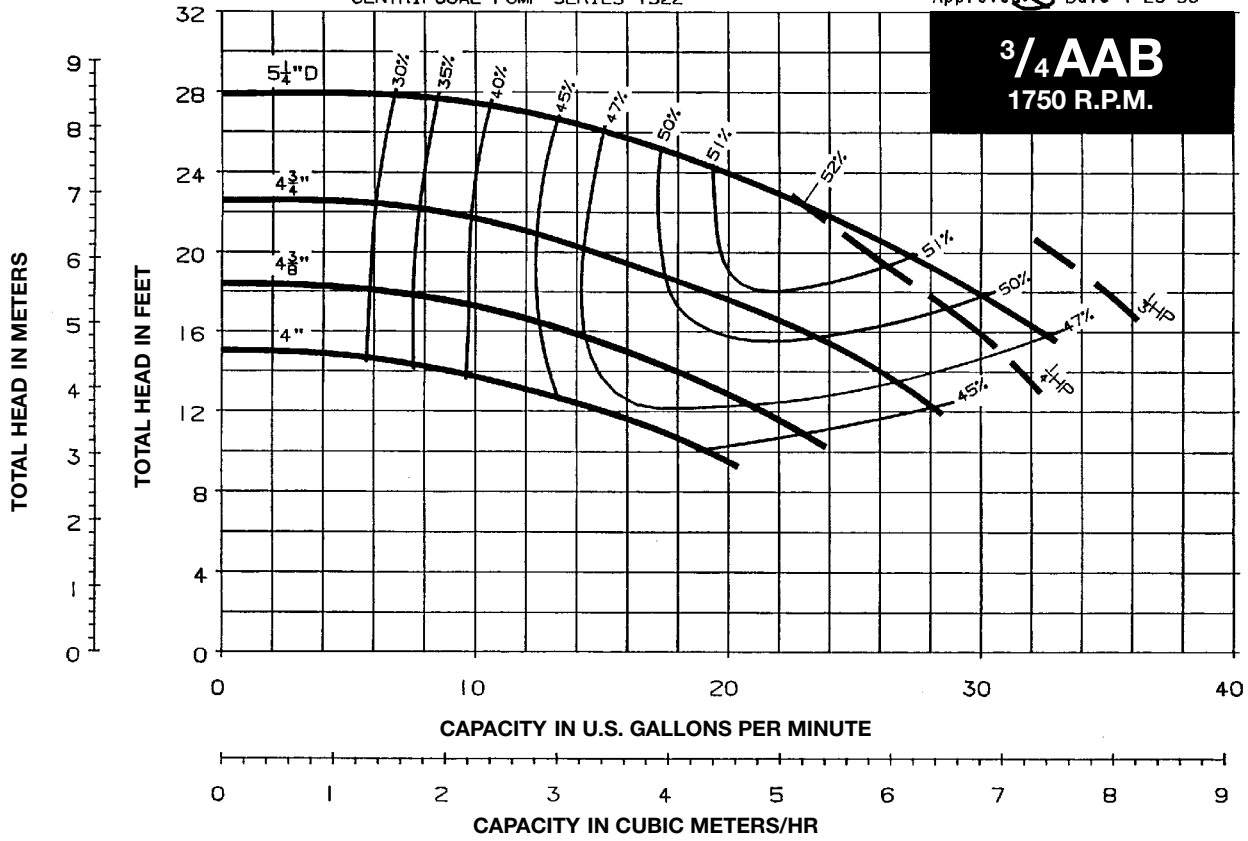
SERIES 1522 PUMP PERFORMANCE CURVES

NOTE: Dotted lines represent sizes available from stock.


CENTRIFUGAL PUMP SERIES 1522

Approved  Date 4-20-93

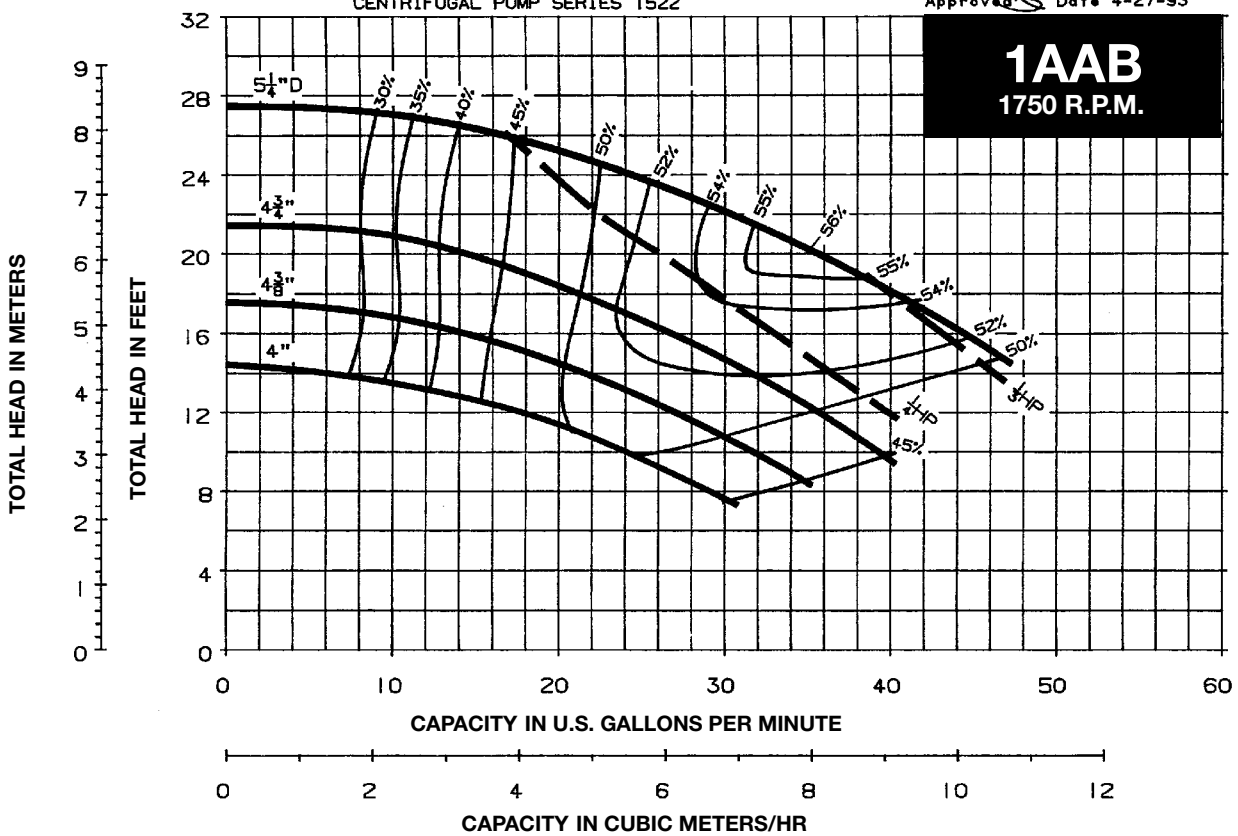
3/4 AAB
1750 R.P.M.



CENTRIFUGAL PUMP SERIES 1522

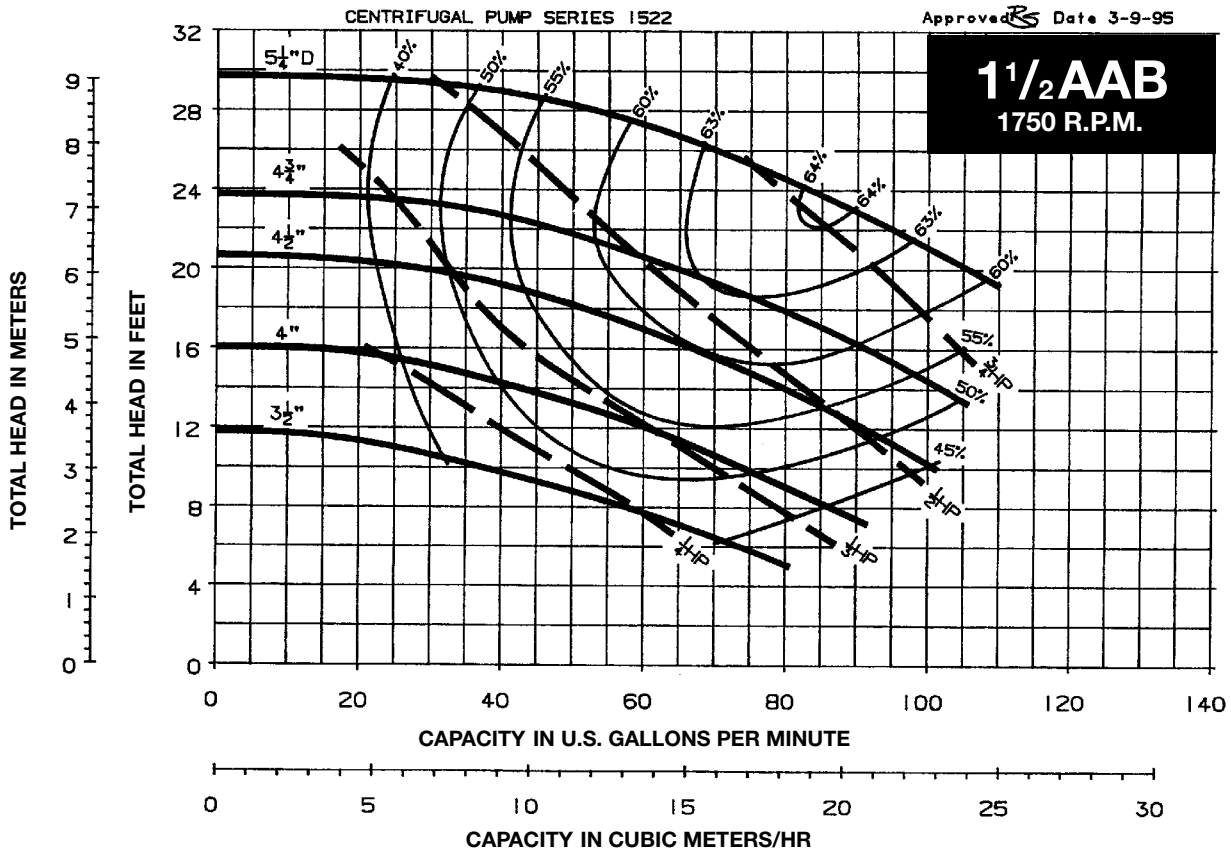
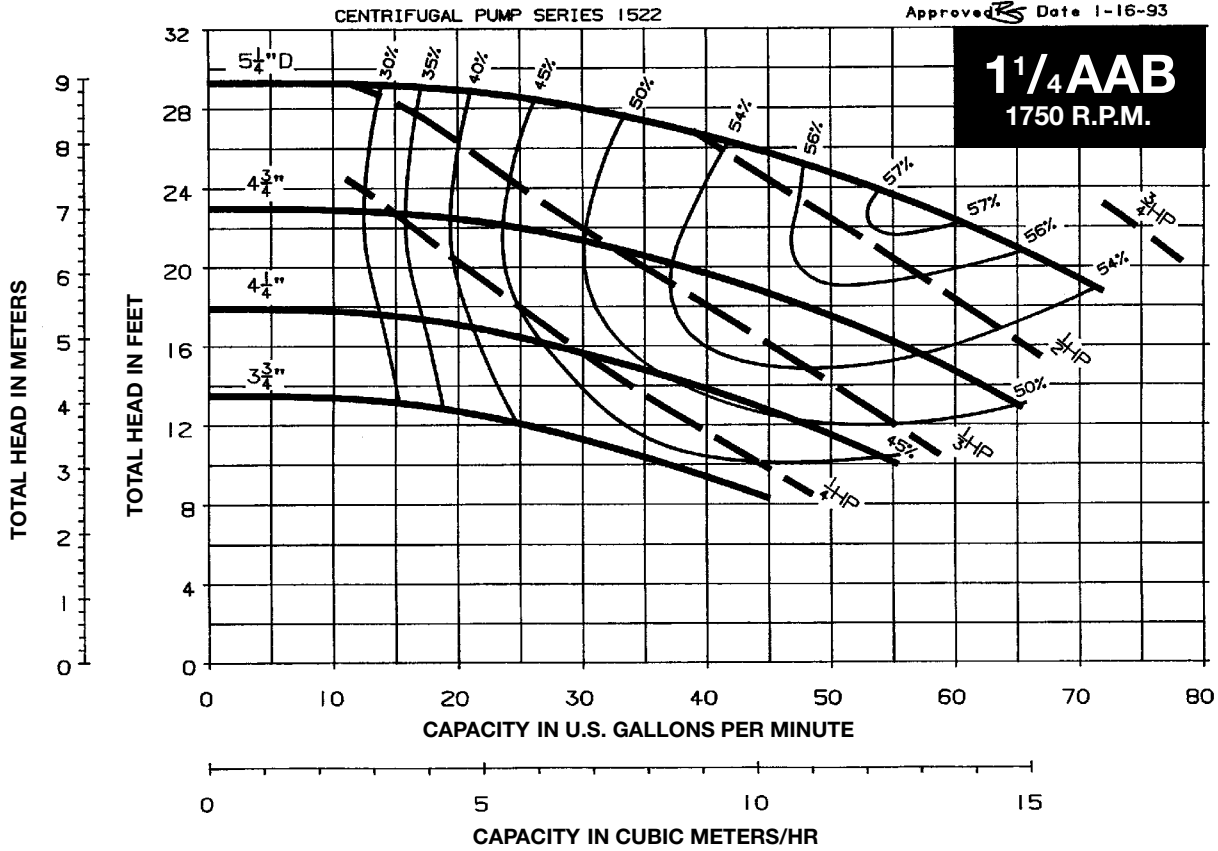
Approved  Date 4-27-93

1AAB
1750 R.P.M.



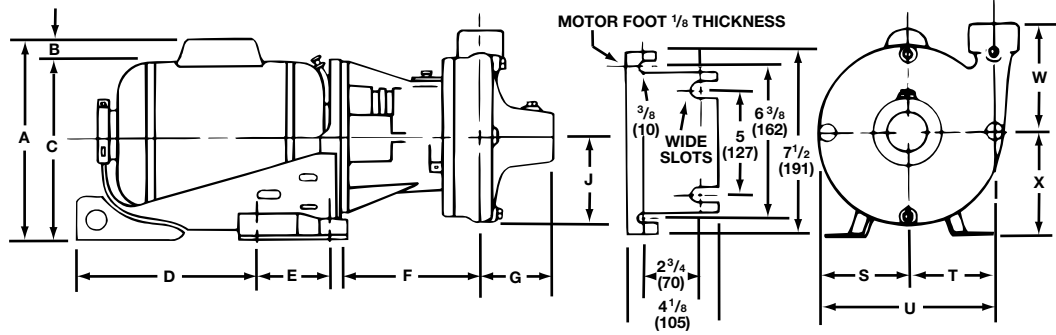
SERIES 1522 PUMP PERFORMANCE CURVES

NOTE: Dotted lines represent sizes available from stock.



Dimensions

**BUILT TO
ORDER PUMPS**



PUMP DIMENSIONS (MM)

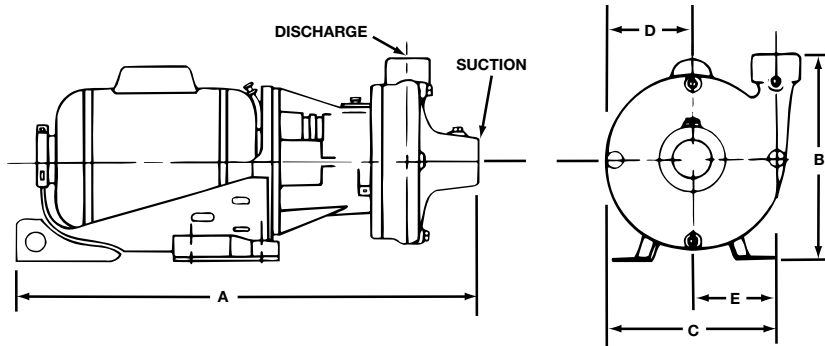
DISCHARGE	SUCTION	F	G	J	S	T	U	W
3/4 AAB	1 1/4	5 7/8 (149)	3 3/16 (81)	3 13/32 (87)	3 1/16 (87)	3 (76)	6 7/16 (164)	3 1/2 (89)
1 AAB	1 1/4	5 7/8 (149)	2 15/16 (75)	3 3/4 (95)	3 5/8 (92)	3 3/8 (86)	7 (178)	4 1/2 (114)
1 1/4 AAB	1 1/2	6 (152)	3 1/16 (78)	3 7/8 (98)	3 11/16 (94)	3 3/16 (84)	7 (178)	4 3/8 (111)
1 1/2 AAB	2	6 1/8 (156)	2 15/16 (75)	4 (102)	3 11/16 (94)	3 3/8 (86)	7 1/16 (179)	5 3/16 (132)

MOTOR DIMENSIONS — 1750 RPM (MM)

H.P.	RPM	PHASE	A	B	C	D	E	X
1/4	1750	1	7 1/2 (191)	—	7 1/2 (191)	6 3/8 (162)	13/16 (21)	4 3/8 (111)
1/4	1750	3	7 1/2 (191)	—	7 1/2 (191)	6 1/8 (156)	13/16 (21)	4 3/8 (111)
1/3	1750	1	9 9/16 (243)	2 1/16 (52)	7 1/2 (191)	6 3/8 (162)	13/16 (21)	4 3/8 (111)
1/3	1750	3	7 1/2 (191)	—	7 1/2 (191)	7 3/8 (187)	13/16 (21)	4 3/8 (111)
1/2	1750	1	9 9/16 (243)	2 1/16 (52)	7 1/2 (191)	7 3/8 (187)	13/16 (21)	4 3/8 (111)
1/2	1750	3	7 1/2 (191)	—	7 1/2 (191)	7 3/8 (187)	13/16 (21)	4 3/8 (111)
3/4	1750	1	9 9/16 (243)	2 1/16 (52)	7 1/2 (191)	7 3/8 (187)	13/16 (21)	4 3/8 (111)
3/4	1750	3	7 1/2 (191)	—	7 1/2 (191)	7 1/8 (200)	13/16 (21)	4 3/8 (111)

Not to be used for construction purposes unless certified.

STOCK PUMPS



UNIT NO.	SUCTION SIZE INCHES NPT	DISCHARGE SIZE INCHES NPT	MOTOR SIZE		APPROXIMATE DIMENSIONS IN INCHES (MM) NOT TO BE USED FOR INSTALLATION				
			H.P.	SPEED RPM	A	B	C	D	E
1	1 1/4	3/4 AAB	1/4	1750	19 (483)	7 1/8 (200)	7 1/4 (184)	3 7/16 (87)	3 13/16 (91)
2	1 1/4	1 AAB	1/3	1750	19 3/4 (502)	8 7/8 (225)	8 (203)	3 5/8 (219)	4 3/8 (111)
3	1 1/2	1 1/4 AAB	1/2	1750	20 (508)	8 3/4 (222)	8 3/16 (208)	3 11/16 (94)	4 1/2 (114)
4	2	1 1/2 AAB	3/4	1750	20 1/2 (521)	9 9/16 (243)	8 3/8 (213)	3 11/16 (94)	4 11/16 (119)

For further information, contact ITT Bell & Gossett, 8200 N. Austin Avenue, Morton Grove, IL 60053, Phone (847) 966-3700 – Facsimile (847) 966-8366.