

ecocirc[®] e³ series
Domestic hot water pumps

The energy-saving, shaft-free,
high-performance, domestic
hot water pump.



ecocirc® e³ series

Domestic hot water pumps

The first pump to run off of 10 watts
- about the same as a night light!



Features

- Easy installation
- Programmable timer and built-in thermostat available to further reduce energy consumption.
- Available with integrated check and ball valves for quick isolation during service.

Benefits

- Instant availability of hot water, even at the tap farthest from the hot water heater.
- Conserves natural resources - reduced power consumption, co2 emissions and wasted water.

Energy Efficient Due to ECM Technology

The ecocirc® pumps' highly efficient ECM (Electronically Commutated Motor) design results in significant energy savings with improved performance: Through microprocessor technology the motor is provided the precise frequency and voltage for optimum performance. A permanent magnet motor eliminates the requirement for input power to magnetize the rotor, thus maximizing efficiency. This unique design offers superior starting torque when compared with standard induction motor type pumps.

The spherical motor design:

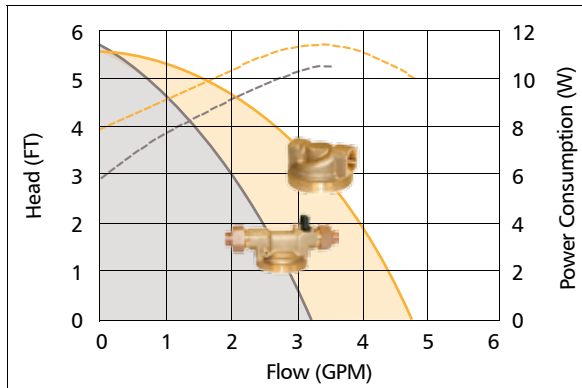
The only moving part of this pump type is a spherical rotor/impeller unit which is suspended on an extremely wear resistant ceramic ball. Shaft seals or conventional bearing bushings with a shaft have been eliminated.

The only self realigning bearing in the small pump market has many advantages:

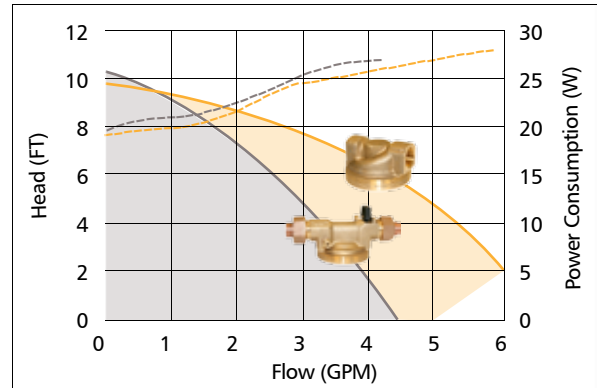
- The suspension on a ball eliminates any bearing play, even after years of use.
- The bearing is self-realigning. It is automatically lubricated and cooled by the system fluid.
- The rotor is magnetically centered on the bearing and therefore can tilt to avoid blockage by small dirt particles. Even after a long time of shut-off, a safe start-up is virtually guaranteed.
- The pump can be cleaned easily with typical household cleaners in the unlikely case of scale deposits. Integrated step-less scale protection thermostats are optional.

ecocirc® e³ pump curves

e³ - 4 Pump Curves



e³ -6 Pump Curves



— UltraCirc Housing Flow - - - UltraCirc Housing Energy Consumption
 - - - NPT/Sweat Housing Flow - . - NPT/Sweat Housing Energy Consumption

- Saves 68% electricity compared to a standard circulating pump
- Long lasting, silent operation
- Maintenance free without blockage
- Highly efficient ECM technology
- Resistant to scale build up
- Single bearing design
- No shaft, no seal

e³-Timer

Description

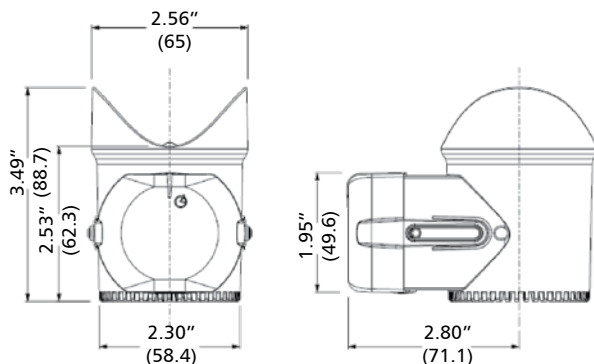
To increase the overall efficiency of a domestic hot water recirculating system and to reduce water wasted while waiting for hot water, the e³ Timer can be installed on all e³ pumps. The timer is easily installed by removing the motor end cap, plugging in the timer and setting the timer schedule without any wiring. The timer can be used in 3-different selections: ON, OFF and TIMER. The ON selection operates the pump continuously, the OFF selection turns the pump OFF and the TIMER selection (depicted by a clock on the timer) turns the pump on when programmed.

Operational Limits

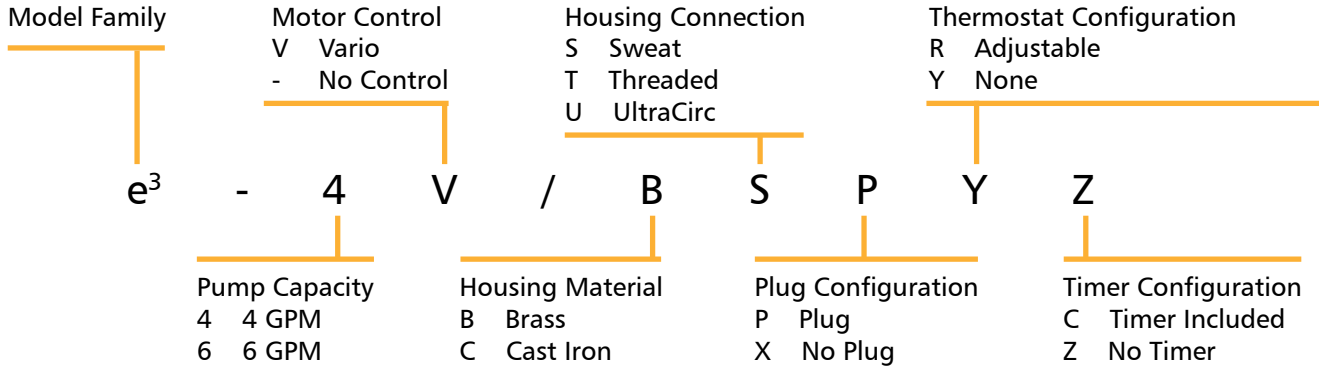
Power Supply: Internally powered by the e³ circulating pump.

Minimum Switch Interval: 30 minutes.

Run Modes: ON (Continuous), OFF (Off at all times) and TIMER (run at programmed intervals)



Model Nomenclature



Motor Control

(V) Vario - A built in step less switch allows for the user to choose the speed at which the pump will operate.
 (-) There is no control and the pump operates at full speed at all times.

Housing Connection

(S) 1/2" Sweat Connection
 (T) 1/2" FNPT Connection
 (U) 1/2" UltraCirc Connection

Plug Configuration

(P) e³ pumps have the option to be pre-wired with a 6ft. electrical plug.
 (X) e³ pumps can also be permanently wired to the building electrical system.

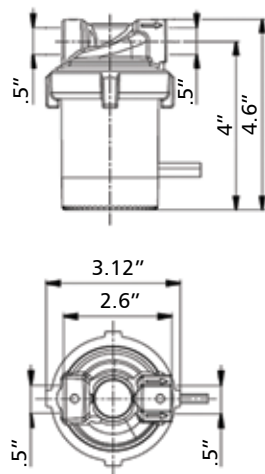
Thermostat Configuration

(R) Comes with a built-in adjustable thermostat.
 (Y) No thermostat.

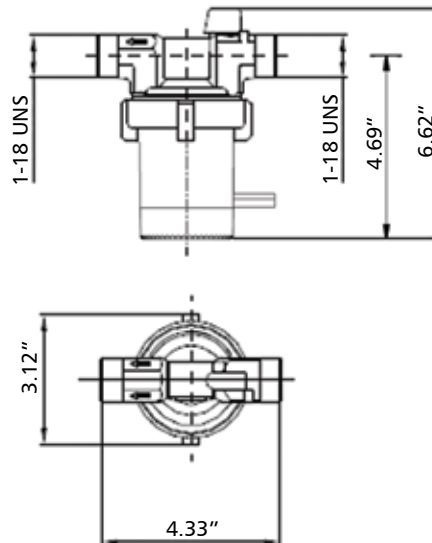
Timer Configuration

(C) Comes with a pre-assembled timer.
 (Z) Timer sold separately.

Standard Pump Housing
(Sweat & Threaded)



UltraCirc Pump Housing
(Union with Ball & Check Valve)



ITT
 8200 N. Austin Avenue
 Morton Grove, Illinois 60053
 Tel: (847) 966-3700
 Fax: (847) 966-9052
 www.bellgossett.com



Engineered for life