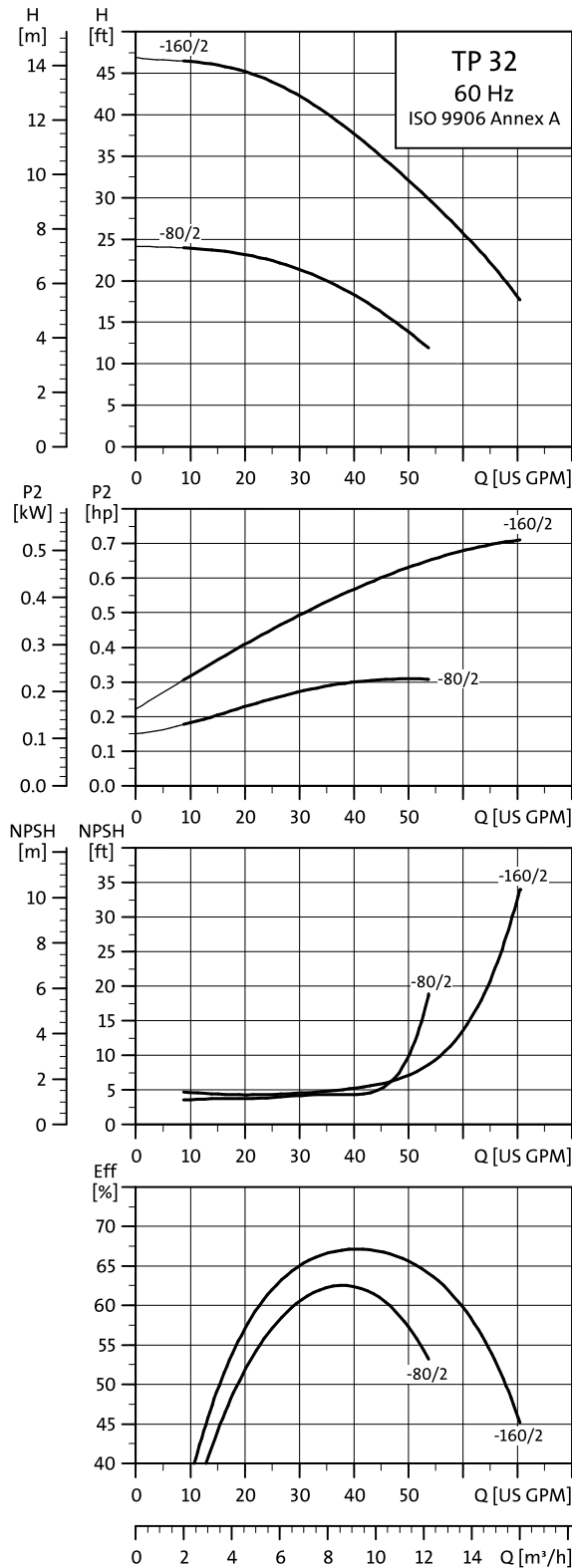
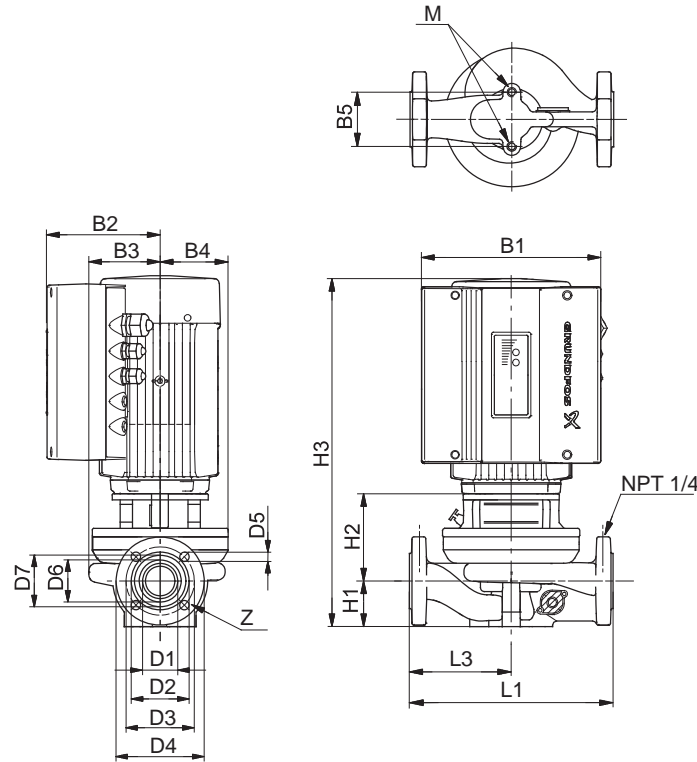


TP 32-XX/2



TM02 5553 3206



TM03 3669 0606

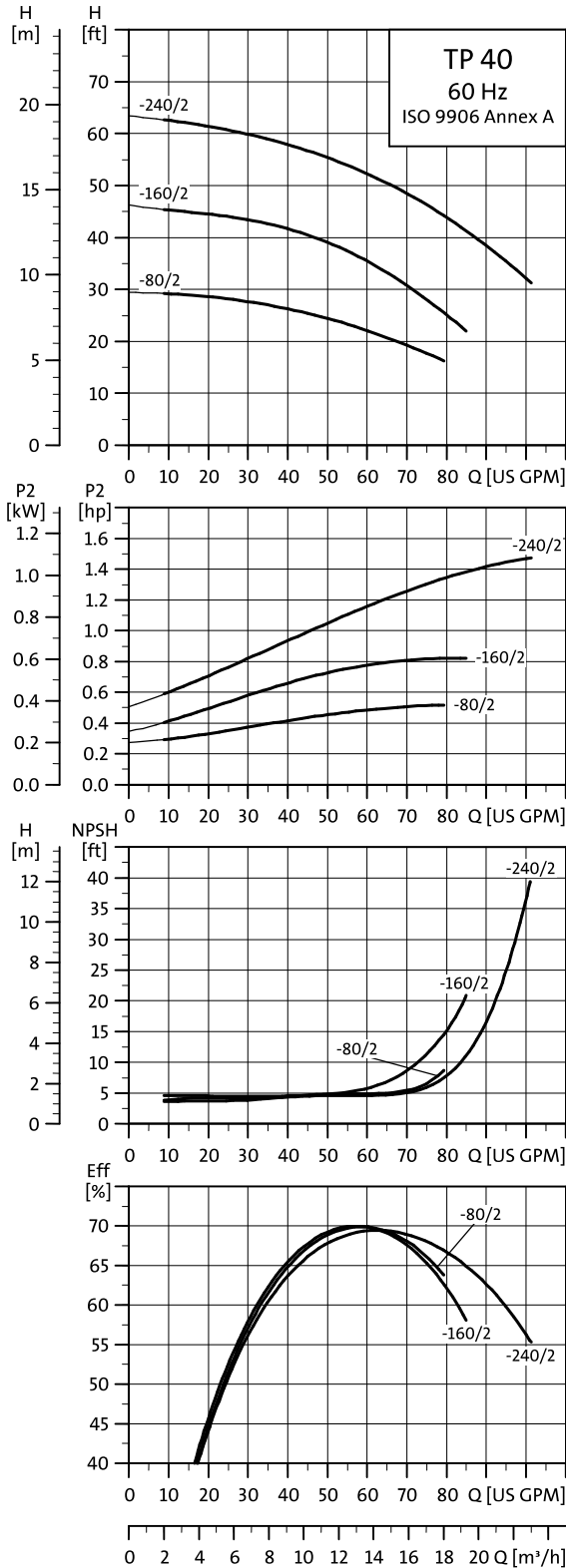
Technical data

| Pump type | TPE 32-80/2 | | TPE 32-160/2 | |
|---------------------------|-------------|-------|--------------|-------|
| | NEMA 56C | | NEMA 56C | |
| Motor Type | NEMA 56C | | NEMA 56C | |
| P2 [HP] / Max Speed [RPM] | 0.50 | 3400 | 0.75 | 3400 |
| Motor Flange | 56C | | 56C | |
| Flange Type | US (1) | | US (2) | |
| D1 [Inch] / [mm] | 1 7/16 | 35.9 | 1 11/16 | 43 |
| D2 [Inch] / [mm] | 2 9/16 | 65 | 2 7/8 | 73 |
| D3 [Inch] / [mm] | 3 1/2 | 89 | 3 15/16 | 100 |
| D4 [Inch] / [mm] | 4 5/8 | 117 | 5 | 127 |
| D5 [Inch] / [mm] | 5/8 | 16 | 11/16 | 16 |
| D6 [Inch] / [mm] | 1 13/16 | 46 | 2 1/16 | 52 |
| D7 [Inch] / [mm] | 2 1/4 | 57 | 2 9/16 | 65 |
| B1 [Inch] / [mm] | 5 9/16 | 141 | 5 9/16 | 141 |
| B2 [Inch] / [mm] | 5 1/2 | 140 | 5 1/2 | 140 |
| B3 [Inch] / [mm] | 3 | 75 | 3 | 75 |
| B4 [Inch] / [mm] | 3 | 75 | 3 | 75 |
| B5 [Inch] / [mm] | 3 3/16 | 80 | 3 | 75 |
| H1 [Inch] / [mm] | 2 11/16 | 68 | 2 11/16 | 68 |
| H2 [Inch] / [mm] | 5 13/16 | 147.6 | 5 7/8 | 148.4 |
| H3 [Inch] / [mm] | 16 1/16 | 408.6 | 16 1/8 | 409.4 |
| L1 [Inch] / [mm] | 11 | 279.4 | 13 1/2 | 343 |
| L3 [Inch] / [mm] | 5 1/2 | 139.7 | 6 3/4 | 171 |
| M | M12 | | M12 | |
| Net Weight [lbs]/[kg] | 60 | 27 | 65 | 29 |
| Gross Weight [lbs] / [kg] | 63 | 28.6 | 68 | 30.8 |

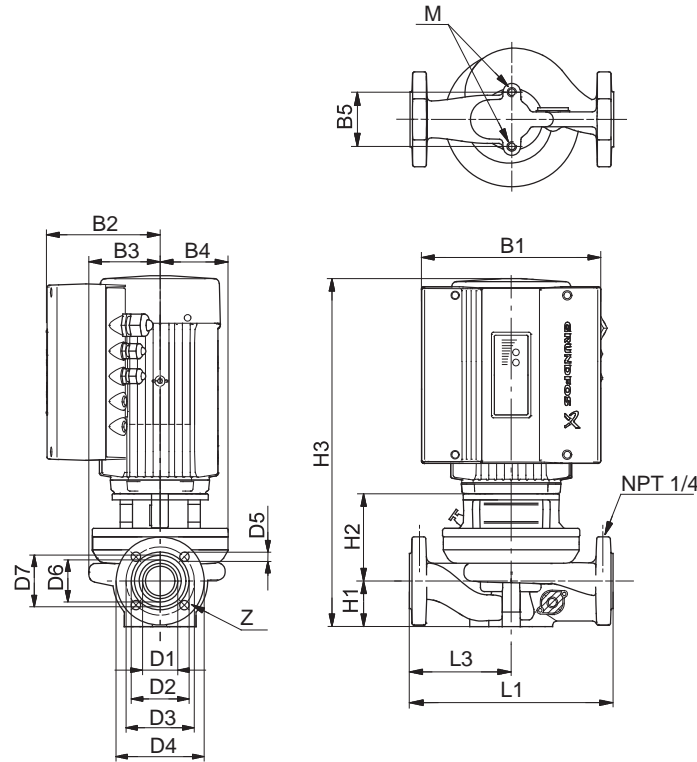
(1) 1-1/4", 2 bolt with 5/8 dia. holes

(2) 1-1/2", 2 bolt with 5/8 dia. holes

TP 40-XX/2



TM02 5554 3206



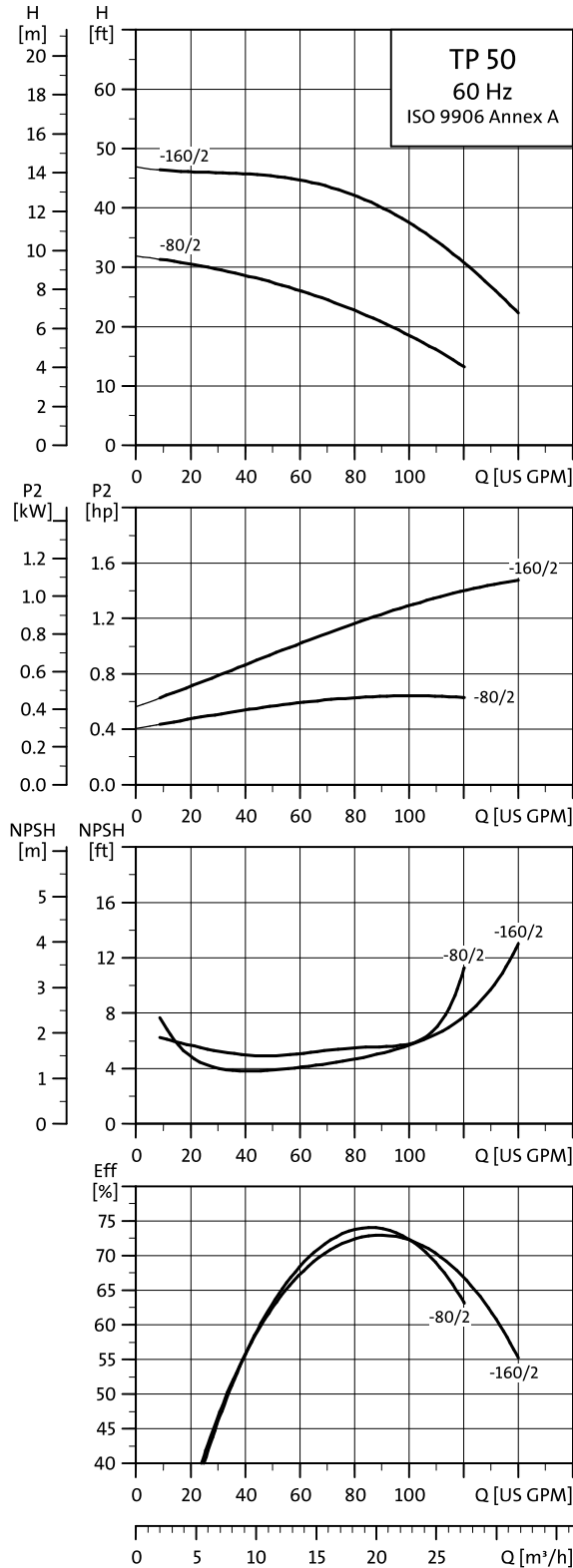
TM03 3669 0606

Technical data

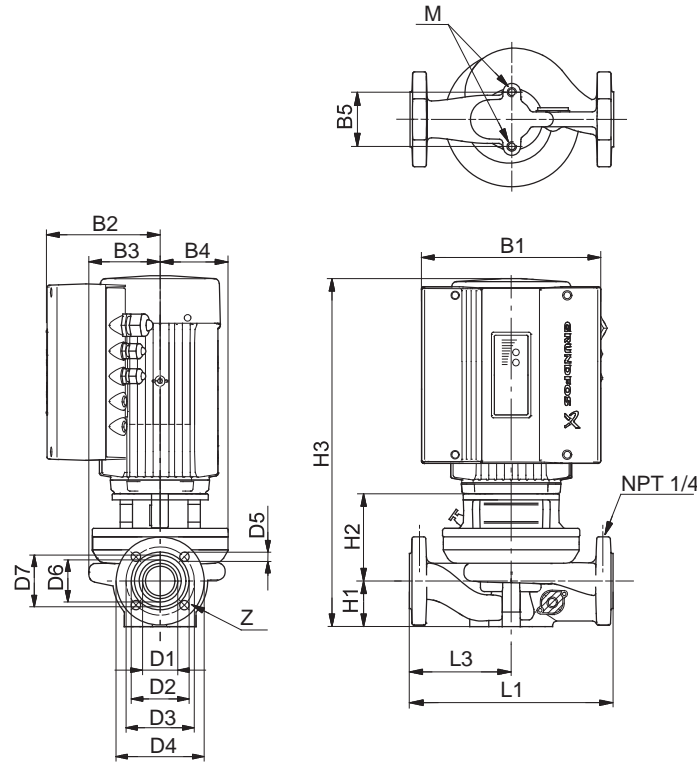
| Pump type | TPE 40-80/2 | | TPE 40-160/2 | | TPE 40-240/2 | |
|---------------------------|-------------|----------|--------------|----------|--------------|----------|
| | Motor Type | NEMA 56C | Motor Type | NEMA 56C | Motor Type | NEMA 56C |
| P2 [HP] / Max Speed [RPM] | 0.75 | 3400 | 0.75 | 3400 | 1.5 | 3400 |
| Motor Flange | 56C | | 56C | | 56C | |
| Flange Type | US (1) | | US (1) | | US (1) | |
| D1 [Inch] / [mm] | 1 11/16 | 41.8 | 1 11/16 | 41.8 | 1 11/16 | 41.8 |
| D2 [Inch] / [mm] | 2 7/8 | 73 | 2 7/8 | 73 | 2 7/8 | 73 |
| D3 [Inch] / [mm] | 3 15/16 | 99 | 3 15/16 | 99 | 3 15/16 | 99 |
| D4 [Inch] / [mm] | 5 | 127 | 5 | 127 | 5 | 127 |
| D5 [Inch] / [mm] | 5/8 | 16 | 5/8 | 16 | 5/8 | 16 |
| D6 [Inch] / [mm] | 2 1/16 | 52 | 2 1/16 | 52 | 2 1/16 | 52 |
| D7 [Inch] / [mm] | 2 9/16 | 64.6 | 2 9/16 | 64.6 | 2 9/16 | 64.6 |
| B1 [Inch] / [mm] | 5 9/16 | 141 | 5 9/16 | 141 | 5 9/16 | 141 |
| B2 [Inch] / [mm] | 5 1/2 | 140 | 5 1/2 | 140 | 5 1/2 | 140 |
| B3 [Inch] / [mm] | 3 | 75 | 3 15/16 | 100 | 3 15/16 | 100 |
| B4 [Inch] / [mm] | 3 | 75 | 3 15/16 | 100 | 3 15/16 | 100 |
| B5 [Inch] / [mm] | 4 3/4 | 120 | 3 3/16 | 80 | 3 3/16 | 80 |
| H1 [Inch] / [mm] | 2 11/16 | 68 | 2 11/16 | 68 | 2 11/16 | 68 |
| H2 [Inch] / [mm] | 6 1/16 | 153.4 | 5 7/8 | 148 | 6 3/16 | 156.6 |
| H3 [Inch] / [mm] | 16 5/16 | 414.4 | 16 1/8 | 409 | 17 5/8 | 447.6 |
| L1 [Inch] / [mm] | 13 1/2 | 342.9 | 13 1/2 | 342.9 | 13 1/2 | 342.9 |
| L3 [Inch] / [mm] | 6 13/16 | 171.5 | 6 13/16 | 171.5 | 6 13/16 | 171.5 |
| M | M12 | M12 | M12 | M12 | M12 | M12 |
| Net Weight [lbs]/[kg] | 65 | 29 | 72 | 33 | 77 | 35 |
| Gross Weight [lbs] / [kg] | 68 | 30.8 | 75 | 34 | 80 | 36.3 |

(1) 1-1/2", 2 bolt with 5/82 dia. holes

TP 50-XX/2



TM02 5555 3206



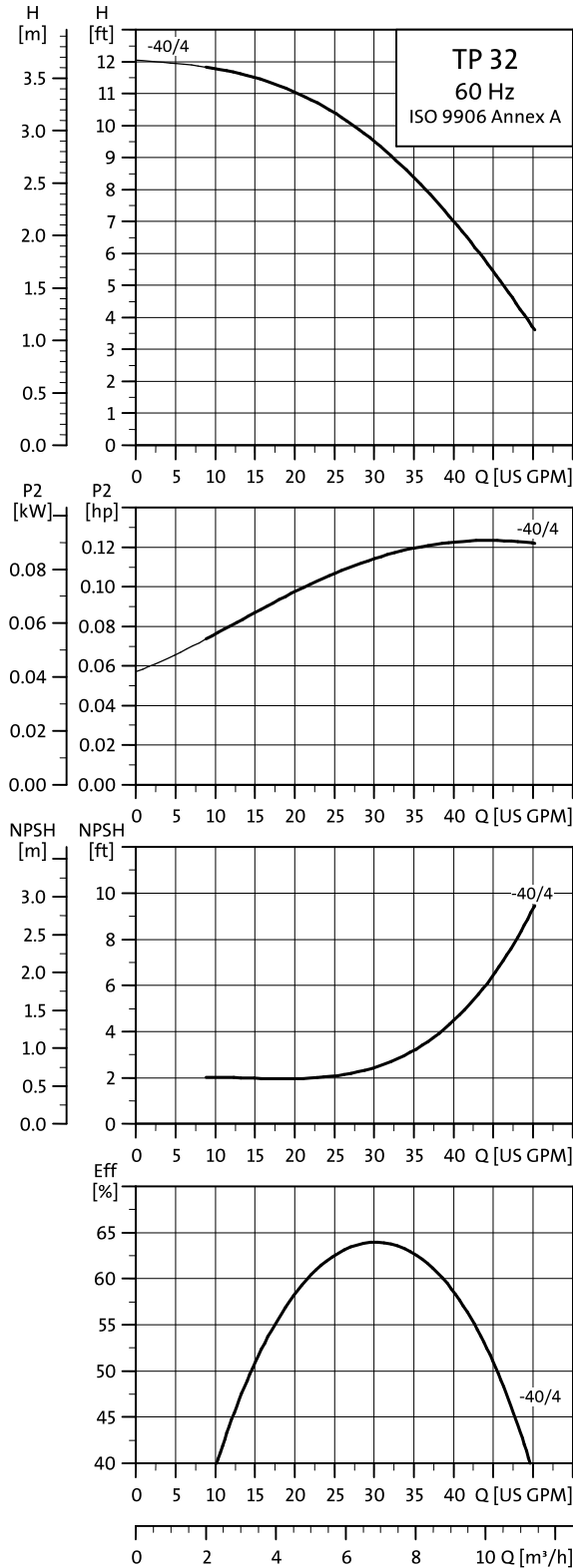
TM03 3669 0606

Technical data

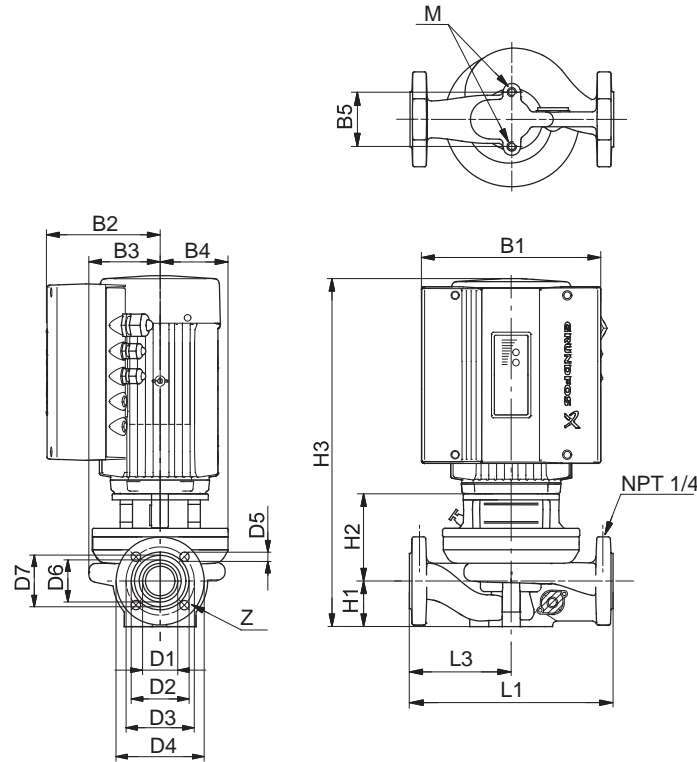
| Pump type | TPE 50-80/2 | | TPE 50-160/2 | |
|---------------------------|----------------|------|-----------------|-------|
| | NEMA 56C | | NEMA 56C | |
| Motor Type | NEMA 56C | | NEMA 56C | |
| P2 [HP] / Max Speed [RPM] | 0.75 | 3400 | 1.5 | 3400 |
| Motor Flange | 56C | | 56C | |
| Flange Type | US (1) | | US (1) | |
| D1 [Inch] / [mm] | 2 1/8 | 54 | 2 1/8 | 53 |
| D2 [Inch] / [mm] | 3 7/16 | 87 | 3 7/16 | 87 |
| D3 [Inch] / [mm] | 4 1/16 | 103 | 4 1/16 | 103 |
| D4 [Inch] / [mm] | 5 1/4 | 133 | 5 1/4 | 133 |
| D5 [Inch] / [mm] | 5/8 | 14.3 | 5/8 | 14.3 |
| D6 [Inch] / [mm] | 2 1/2 | 64 | 2 1/2 | 64 |
| D7 [Inch] / [mm] | 3 1/8 | 78 | 3 1/8 | 78 |
| B1 [Inch] / [mm] | 5 9/16 | 141 | 5 9/16 | 141 |
| B2 [Inch] / [mm] | 5 1/2 | 140 | 5 1/2 | 140 |
| B3 [Inch] / [mm] | 3 3/4 | 95 | 3 15/16 | 100 |
| B4 [Inch] / [mm] | 3 | 76 | 3 15/16 | 100 |
| B5 [Inch] / [mm] | 4 3/4 | 121 | 4 3/4 | 121 |
| H1 [Inch] / [mm] | 3 | 76 | 3 1/4 | 82 |
| H2 [Inch] / [mm] | 6 3/16 | 157 | 5 15/16 | 149.9 |
| H3 [Inch] / [mm] | 16 3/4 | 426 | 17 15/16 | 454.9 |
| L1 [Inch] / [mm] | 11 1/2 | 292 | 14 | 355.6 |
| L3 [Inch] / [mm] | 5 3/4 | 146 | 7 | 177.8 |
| M | M12 | M12 | M12 | M12 |
| Net Weight [lbs]/[kg] | 78 | 35 | 83 | 38 |
| Gross Weight [lbs] / [kg] | 81 | 36.7 | 86 | 39 |

(1) 2", 4 bolt with (4) 9/16" dia. holes

TP 32-XX/4



TM02 5558 3206



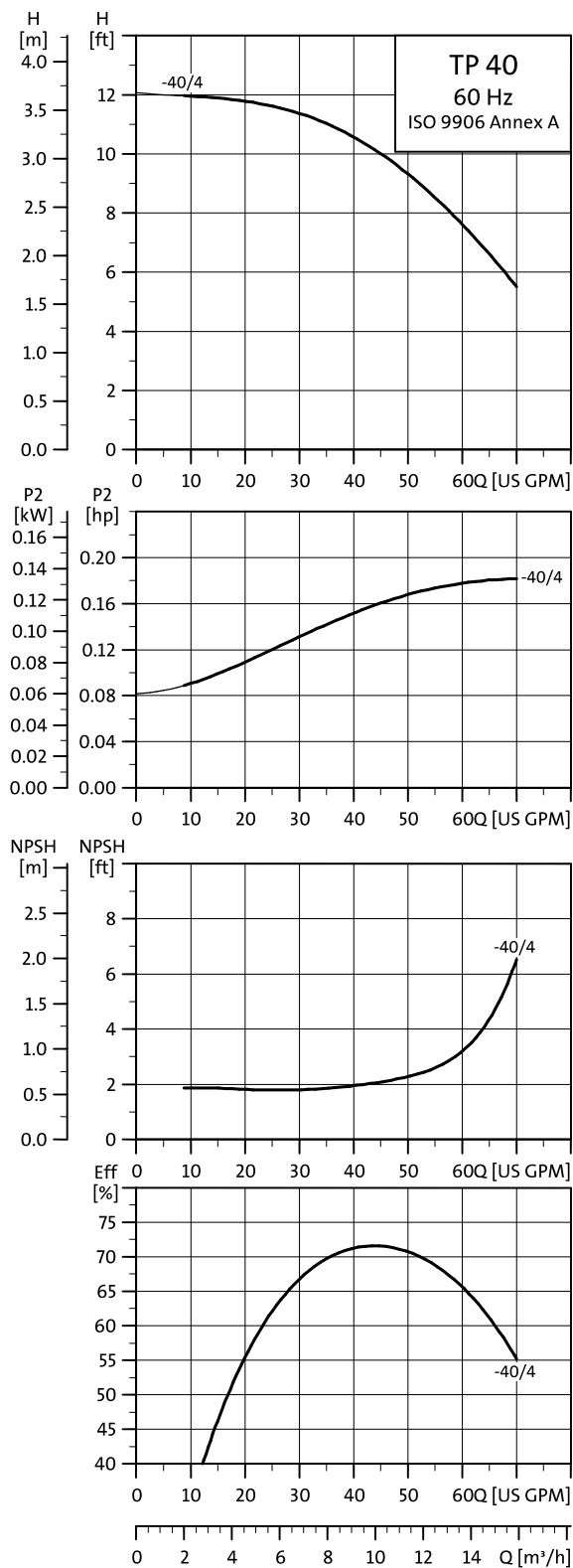
TM03 3669 06/06

Technical data

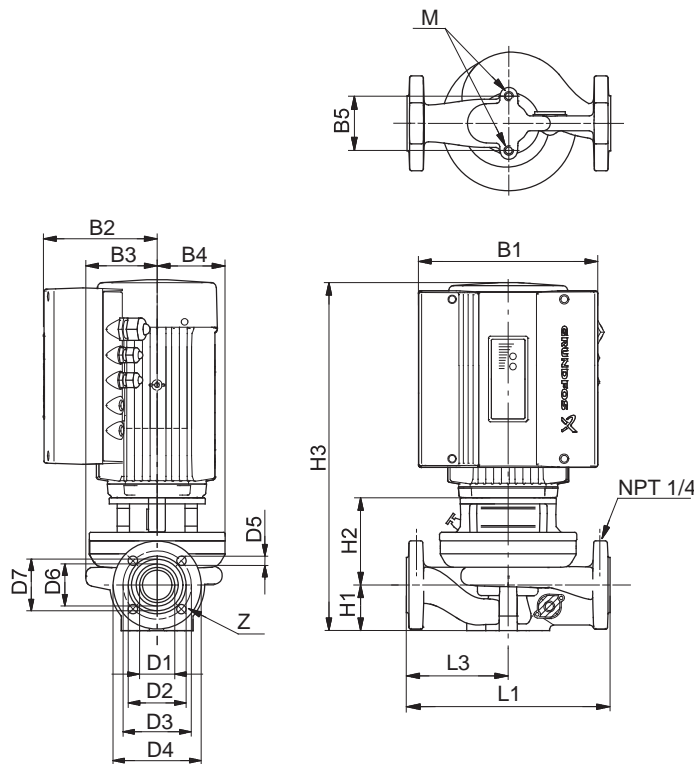
| Pump type | TPE 32-40/4 | |
|---------------------------|----------------|-------|
| Motor Type | NEMA 56C | |
| P2 [HP] / Max Speed [RPM] | 0.33 | 1690 |
| Motor Flange | 56C | |
| Flange Type | US (1) | US |
| D1 [Inch] / [mm] | 1 7/16 | 35.9 |
| D2 [Inch] / [mm] | 2 9/16 | 64 |
| D3 [Inch] / [mm] | 3 9/16 | 89 |
| D4 [Inch] / [mm] | 4 5/8 | 117 |
| D5 [Inch] / [mm] | 11/16 | 16 |
| D6 [Inch] / [mm] | 1 13/16 | 46 |
| D7 [Inch] / [mm] | 2 1/4 | 57 |
| B1 [Inch] / [mm] | 5 9/16 | 141 |
| B2 [Inch] / [mm] | 5 1/2 | 140 |
| B3 [Inch] / [mm] | 3 | 75 |
| B4 [Inch] / [mm] | 3 | 75 |
| B5 [Inch] / [mm] | 3 3/16 | 80 |
| H1 [Inch] / [mm] | 2 11/16 | 68 |
| H2 [Inch] / [mm] | 5 15/16 | 150.3 |
| H3 [Inch] / [mm] | 16 3/16 | 411.3 |
| L1 [Inch] / [mm] | 11 | 279.4 |
| L3 [Inch] / [mm] | 5 1/2 | 139.7 |
| M | M12 | |
| Net Weight [lbs]/[kg] | 58 | 26 |
| Gross Weight [lbs] / [kg] | 61 | 27.7 |

(1) 1-1/4", 2 bolt with 5/8 dia. holes

TP 40-XX/4



TM02 5062 3206



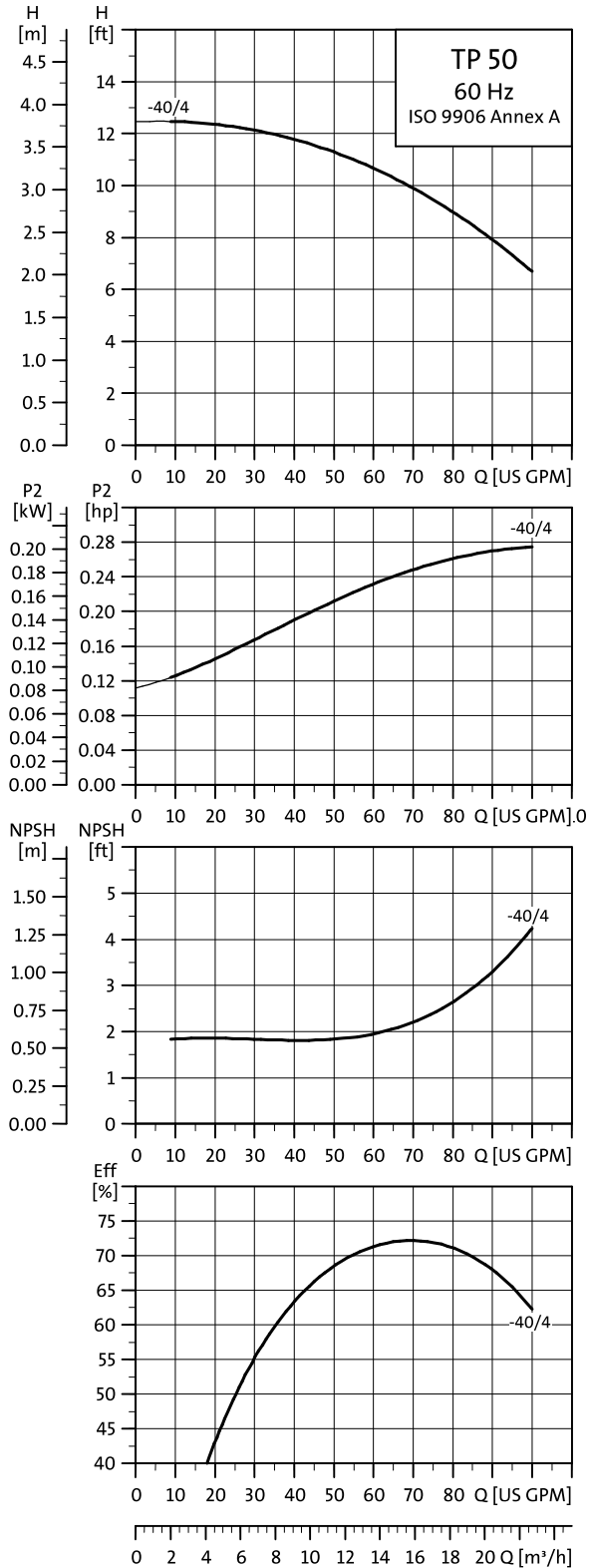
TM03 3669 0606

Technical data

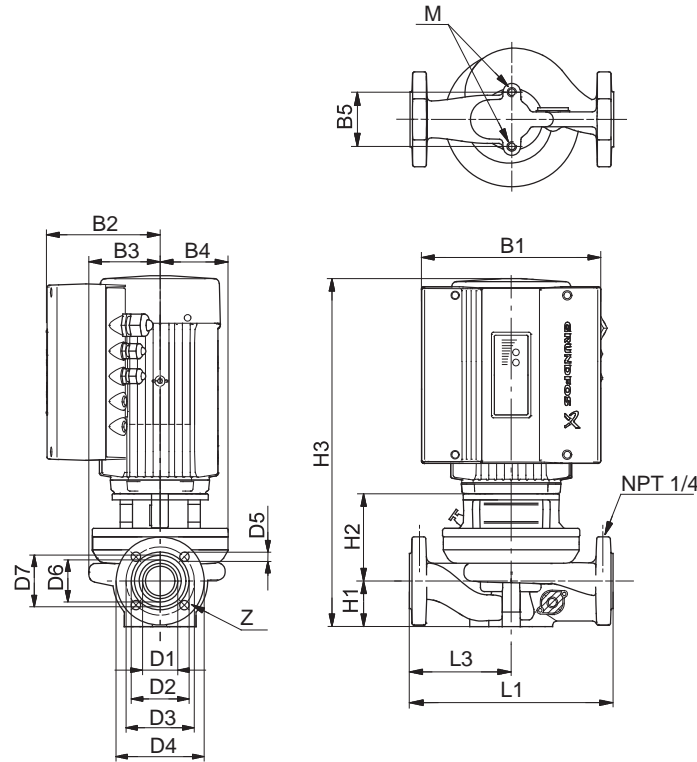
| Pump type | TPE 40-40/4 | |
|---------------------------|----------------|-------|
| Motor Type | NEMA 56C | |
| P2 [HP] / Max Speed [RPM] | 0.33 | 1690 |
| Motor Flange | 56C | |
| Flange Type | US (1) | |
| D1 [Inch] / [mm] | 1 11/16 | 41.8 |
| D2 [Inch] / [mm] | 2 7/8 | 73 |
| D3 [Inch] / [mm] | 3 15/16 | 99 |
| D4 [Inch] / [mm] | 5 | 127 |
| D5 [Inch] / [mm] | 11/16 | 16 |
| D6 [Inch] / [mm] | 2 1/16 | 52 |
| D7 [Inch] / [mm] | 2 9/16 | 64.6 |
| B1 [Inch] / [mm] | 5 9/16 | 141 |
| B2 [Inch] / [mm] | 5 1/2 | 140 |
| B3 [Inch] / [mm] | 3 3/8 | 85 |
| B4 [Inch] / [mm] | 3 | 75 |
| B5 [Inch] / [mm] | 4 3/4 | 120 |
| H1 [Inch] / [mm] | 2 11/16 | 68 |
| H2 [Inch] / [mm] | 6 1/8 | 154.5 |
| H3 [Inch] / [mm] | 16 3/8 | 415.5 |
| L1 [Inch] / [mm] | 13 1/2 | 342.9 |
| L3 [Inch] / [mm] | 6 13/16 | 171.5 |
| M | M12 | |
| Net Weight [lbs] / [kg] | 62 | 28 |
| Gross Weight [lbs] / [kg] | 65 | 29.5 |

(1) 1-1/2", 2 bolt 5/8" dia. holes

TP 50-XX/4



TM02 5560 3206



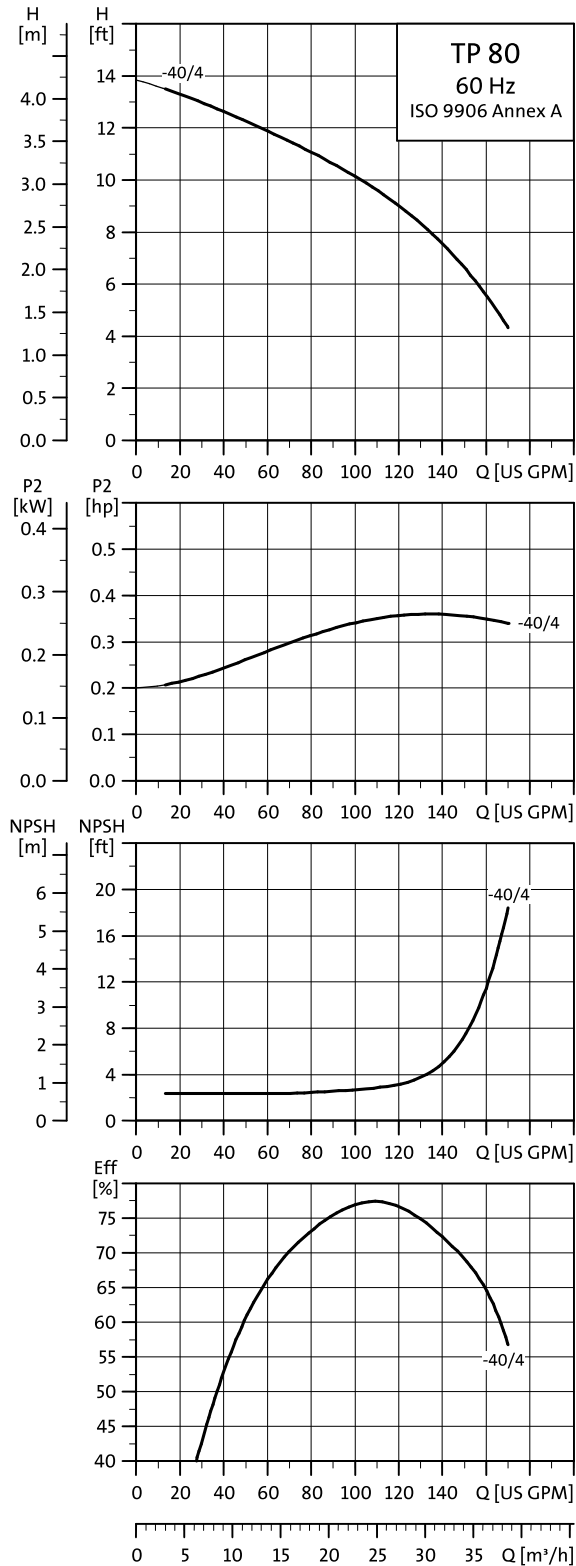
TM03 3669 0606

Technical data

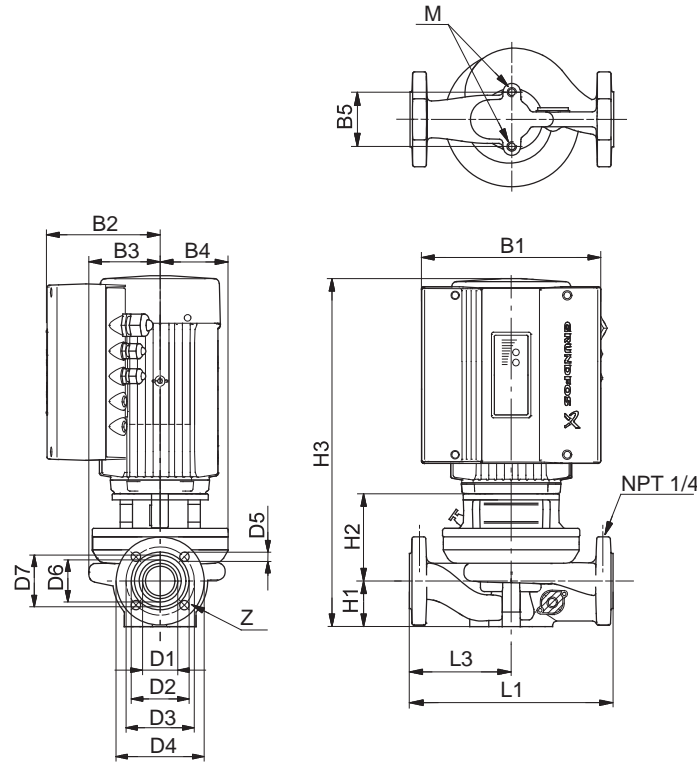
| Pump type | TPE 50-40/4 | |
|---------------------------|----------------|-------|
| Motor Type | NEMA 56C | |
| P2 [HP] / Max Speed [RPM] | 0.33 | 1690 |
| Motor Flange | 56C | |
| Flange Type | US (1) | |
| D1 [Inch] / [mm] | 2 1/8 | 53 |
| D2 [Inch] / [mm] | 3 1/2 | 87.5 |
| D3 [Inch] / [mm] | 4 1/8 | 103.2 |
| D4 [Inch] / [mm] | 5 1/4 | 133 |
| D5 [Inch] / [mm] | 5/8 | 14.3 |
| D6 [Inch] / [mm] | 2 1/2 | 63 |
| D7 [Inch] / [mm] | 3 1/8 | 77.8 |
| B1 [Inch] / [mm] | 5 9/16 | 141 |
| B2 [Inch] / [mm] | 5 1/2 | 140 |
| B3 [Inch] / [mm] | 3 9/16 | 90 |
| B4 [Inch] / [mm] | 3 | 75 |
| B5 [Inch] / [mm] | 4 3/4 | 120 |
| H1 [Inch] / [mm] | 3 1/4 | 82 |
| H2 [Inch] / [mm] | 6 1/4 | 157.6 |
| H3 [Inch] / [mm] | 17 1/16 | 432.6 |
| L1 [Inch] / [mm] | 14 | 355.6 |
| L3 [Inch] / [mm] | 7 | 177.8 |
| M | M12 | |
| Net Weight [lbs] / [kg] | 68 | 31 |
| Gross Weight [lbs] / [kg] | 71 | 32.2 |

(1) 2", 4 bolt with 9/16" dia. holes

TP 80-XX/4



TM02 5561 3206

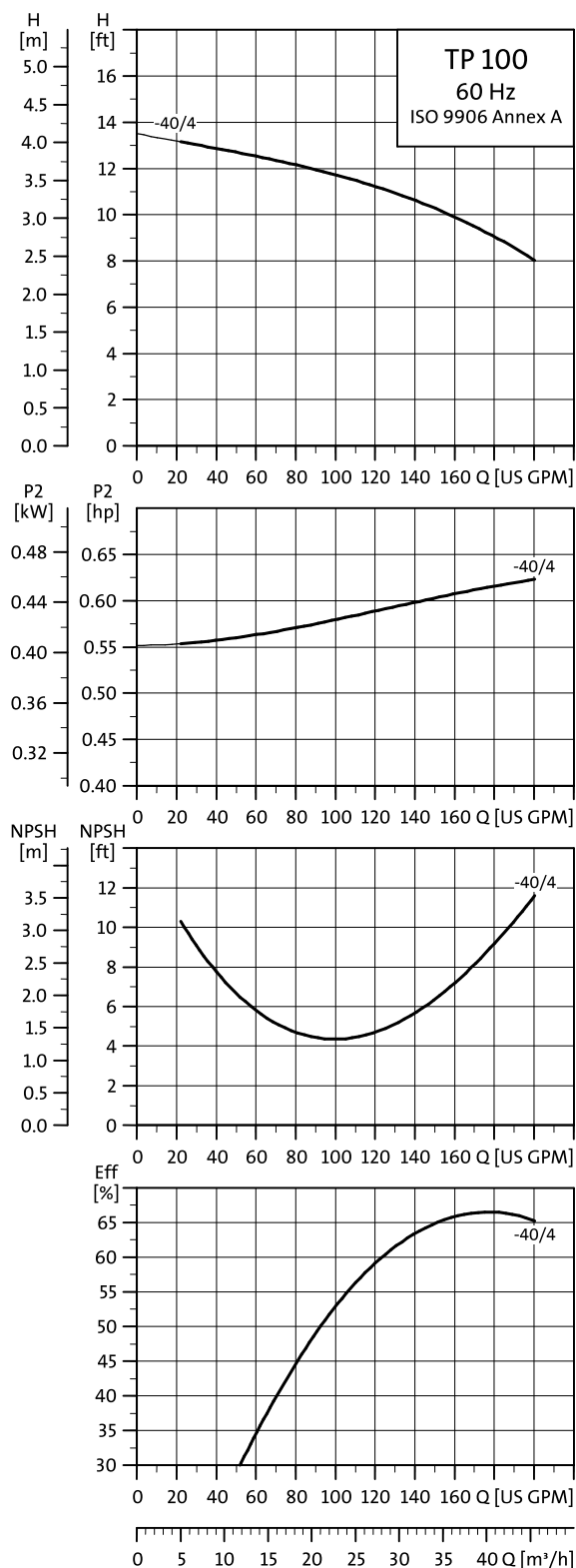


TM03 3669 0606

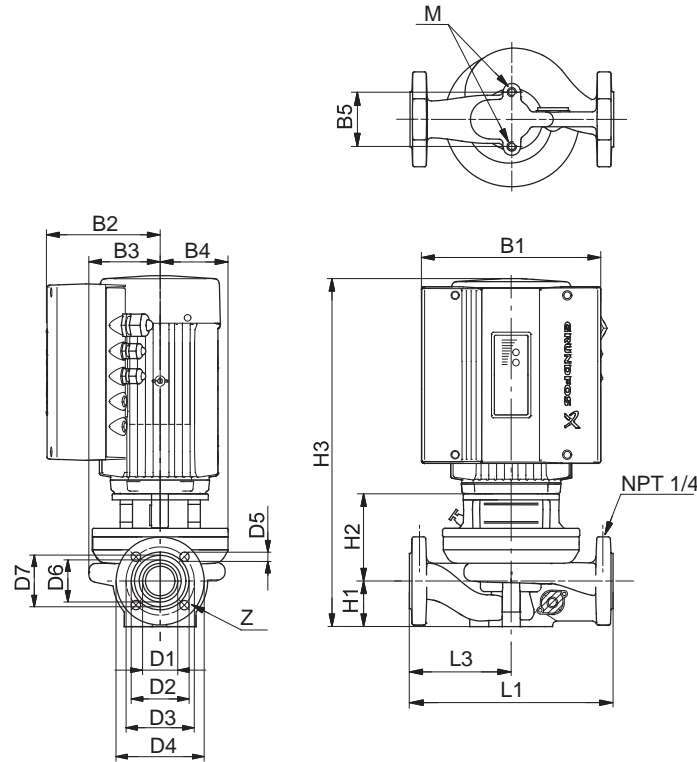
Technical data

| Pump type | TPE 80-40/4 | |
|---------------------------|--------------------|-------|
| Motor Type | NEMA 56C | |
| P2 [HP] / Max Speed [RPM] | 0.50 | 1690 |
| Motor Flange | 56C | |
| Flange Type | 3" ANSI 125lb..RF. | |
| D1 [Inch] / [mm] | 3 3/16 | 80.8 |
| D2 [Inch] / [mm] | 5 | 127 |
| D3 [Inch] / [mm] | 6 | 152 |
| D4 [Inch] / [mm] | 7 9/16 | 191 |
| D5 [Inch] / [mm] | 3/4 | 19 |
| B1 [Inch] / [mm] | 5 9/16 | 141 |
| B2 [Inch] / [mm] | 5 1/2 | 140 |
| B3 [Inch] / [mm] | 4 15/16 | 125 |
| B4 [Inch] / [mm] | 3 15/16 | 100 |
| B5 [Inch] / [mm] | 6 5/16 | 160 |
| H1 [Inch] / [mm] | 3 7/8 | 97 |
| H2 [Inch] / [mm] | 6 3/8 | 160.9 |
| H3 [Inch] / [mm] | 17 3/4 | 450.9 |
| L1 [Inch] / [mm] | 19 | 482.6 |
| L3 [Inch] / [mm] | 9 1/2 | 241.3 |
| M | M16 | M16 |
| Net Weigt [lbs] / [kg] | 120 | 54.4 |
| Gross Weigt [lbs] / [kg] | 122 | 55.3 |

TP 100-XX/4



TM02 5065 3206



TM03 3669 0606

Technical data

| Pump type | TPE 100-40/4 | |
|---------------------------|--------------------|-------|
| Motor Type | NEMA 56C | |
| P2 [HP] / Max Speed [RPM] | 1.0 | 1690 |
| Motor Flange | 56C | |
| Flange Type | 3" ANSI 125lb..RF. | |
| D1 [Inch] / [mm] | 4 3/16 | 105 |
| D2 [Inch] / [mm] | 6 3/16 | 157 |
| D3 [Inch] / [mm] | 7 9/16 | 191 |
| D4 [Inch] / [mm] | 9 1/16 | 229 |
| D5 [Inch] / [mm] | 3/4 | 19 |
| B1 [Inch] / [mm] | 5 9/16 | 141 |
| B2 [Inch] / [mm] | 5 1/2 | 140 |
| B3 [Inch] / [mm] | 5 1/8 | 130 |
| B4 [Inch] / [mm] | 3 15/16 | 100 |
| B5 [Inch] / [mm] | 6 5/16 | 160 |
| H1 [Inch] / [mm] | 4 13/16 | 122 |
| H2 [Inch] / [mm] | 7 7/16 | 188.2 |
| H3 [Inch] / [mm] | 21 | 533.2 |
| L1 [Inch] / [mm] | 21 | 533.4 |
| L3 [Inch] / [mm] | 10 1/2 | 266.7 |
| M | M16 | |
| Net Weigt [lbs] / [kg] | 154 | 69.9 |
| Gross Weigt [lbs] / [kg] | 156 | 70.8 |