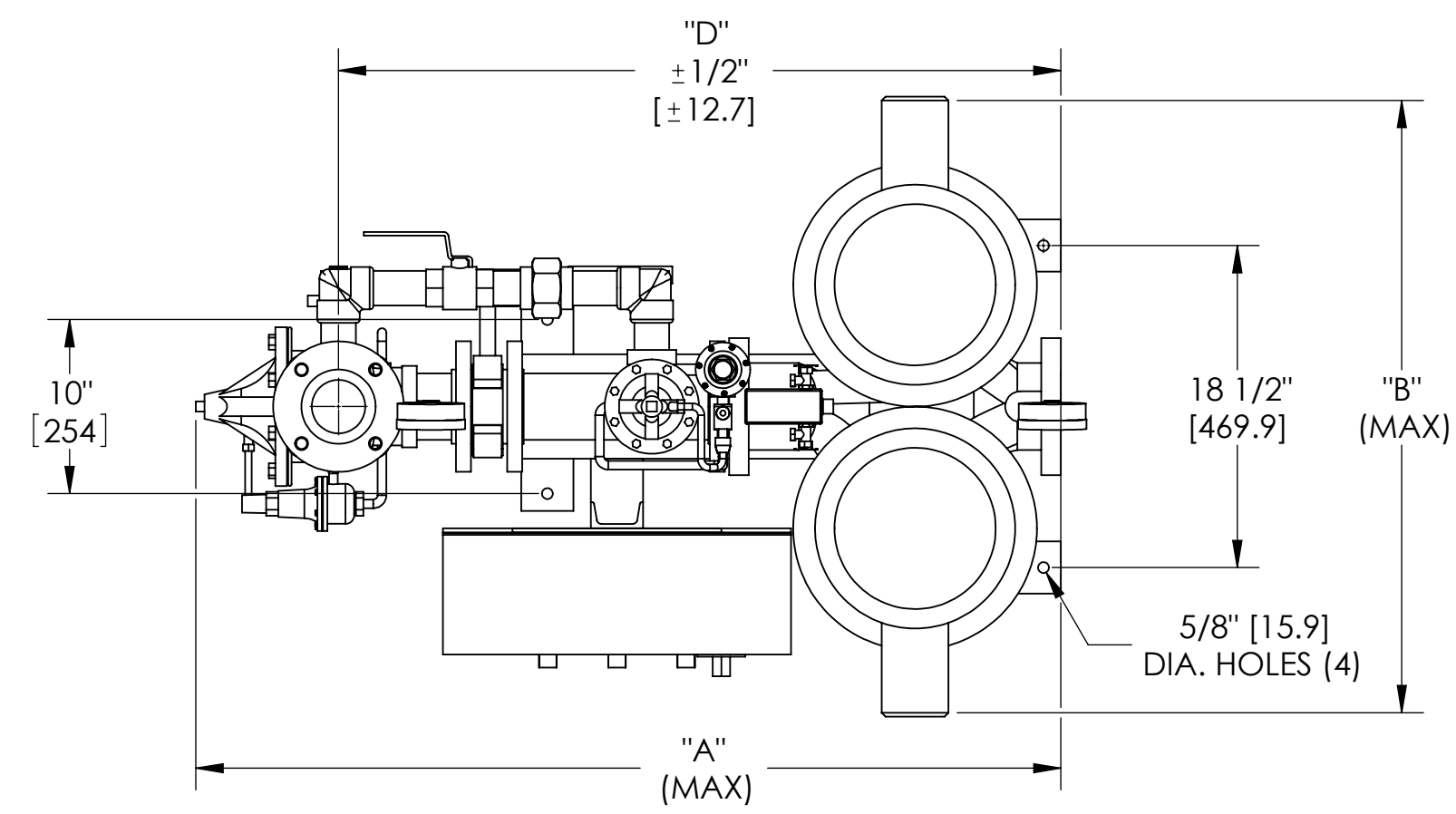


REVISIONS				
ZONE	REV.	DESCRIPTION	DATE	APPROVED
	B	SEE ECO #103534	9/30/09	DG

FILE NO.: 62.5254
 DATE: Feb. 01, 2010
 SUPERSEDES: New
 DATE: New



NOTES:

- 1 - Item ⑤ is standard for continuous run packages and not standard for intermittent use packages, 1/4" NPT to be connected to drain by others.
- 2 - Dimensions are based on factory choice standard components. For other than standard consult factory, as a new drawing may be required.
- 3 - All dimensions are in inches [Metric].
- 4 - Tolerances are +/- 1/4" [6.35] unless otherwise specified.
- 5 - Drawings are for layout purposes only.

Maximum System Pressure: 175 PSI 250 PSI

INLET ORIENTATION

RIGHT HAND - STD. AS SHOWN LEFT HAND

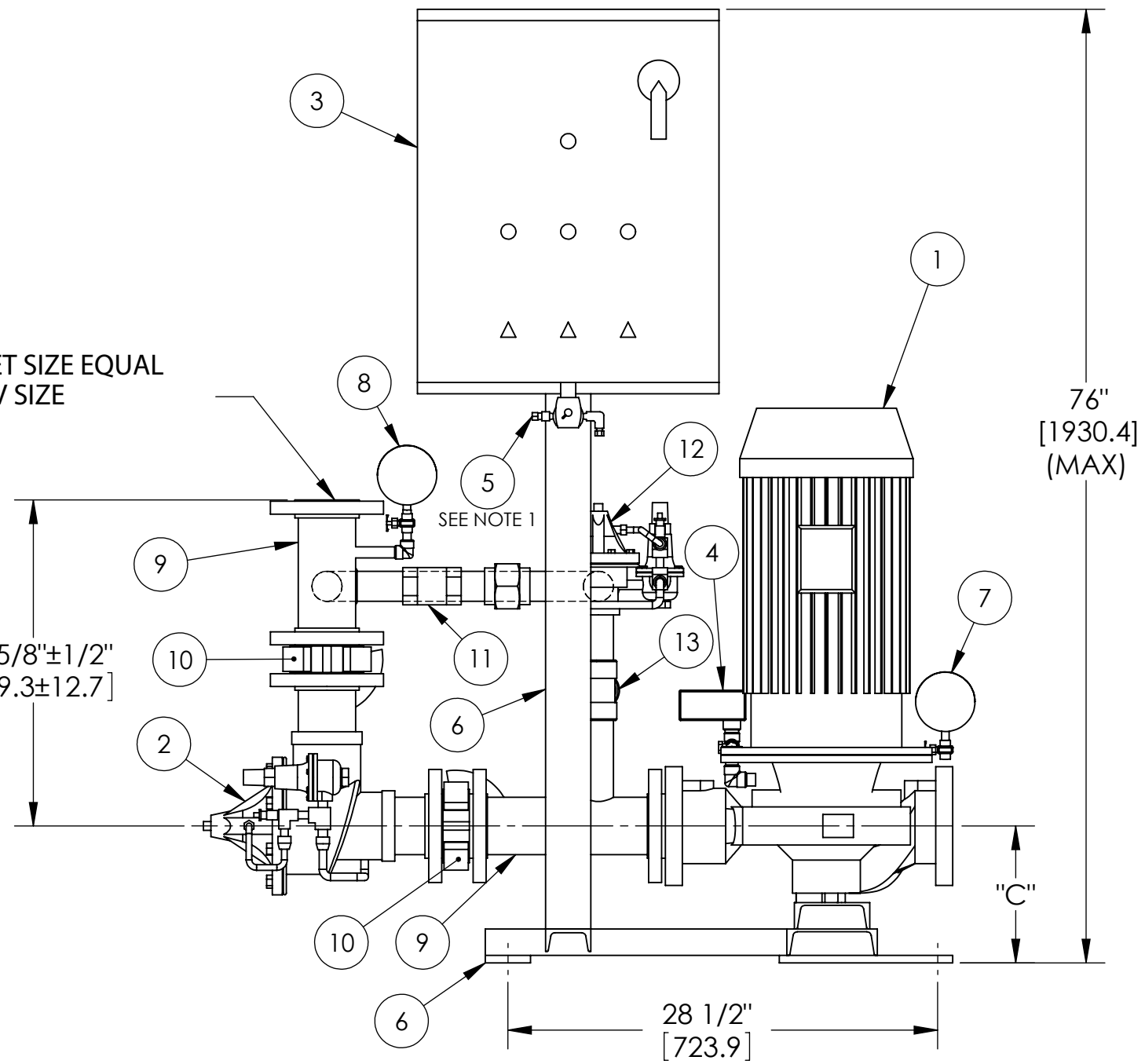
D

C

B

A

OUTLET SIZE EQUAL TO PRV SIZE



DIMENSIONS				
DUALPAK	A	B	C	D
6921-3x3x6	48 [1219.2]	30 [762]	9-1/4 [235]	40-3/4 [1035.1]
6922-3x3x8	49 [1244.6]	30 [762]	9-1/2 [241.3]	41-1/2 [1054.1]

1	DUALARM PUMPS & MOTORS	8	DISCHARGE PRESSURE GAUGE
2	MAIN PRV	9	BY-PASS SPOOL
3	DUAL PUMP CONTROLLER	10	ISOLATION BUTTERFLY
4	AQUASTAT	11	1-1/2" BY-PASS ISOLATION VALVE
5	SOLENOID VALVE (1/4" NPT)	12	1-1/2" BY-PASS PRV
6	BASE & PANEL SUPPORT	13	OPTIONAL 1-1/2" x 1" TANK TEE
7	SUCTION PRESSURE GAUGE		

DO NOT SCALE

DRAWN BY SP	DATE 11/21/03	 ARMSTRONG PUMPS INC. NORTH TONAWANDA, NY 14120
CHECK JMC	DATE 10/05/09	
ENGINEERING DG	DATE 10/05/09	
QUALITY ASSURANCE EH	DATE 10/05/09	
MANUFACTURING MT	DATE 10/05/09	DRAWING TITLE 6921/6922 - DUALPAK DWB
SCALE: NTS		DRAWING NUMBER 2446-002
WEIGHT:		REV. B
SHEET: 1 OF 1		